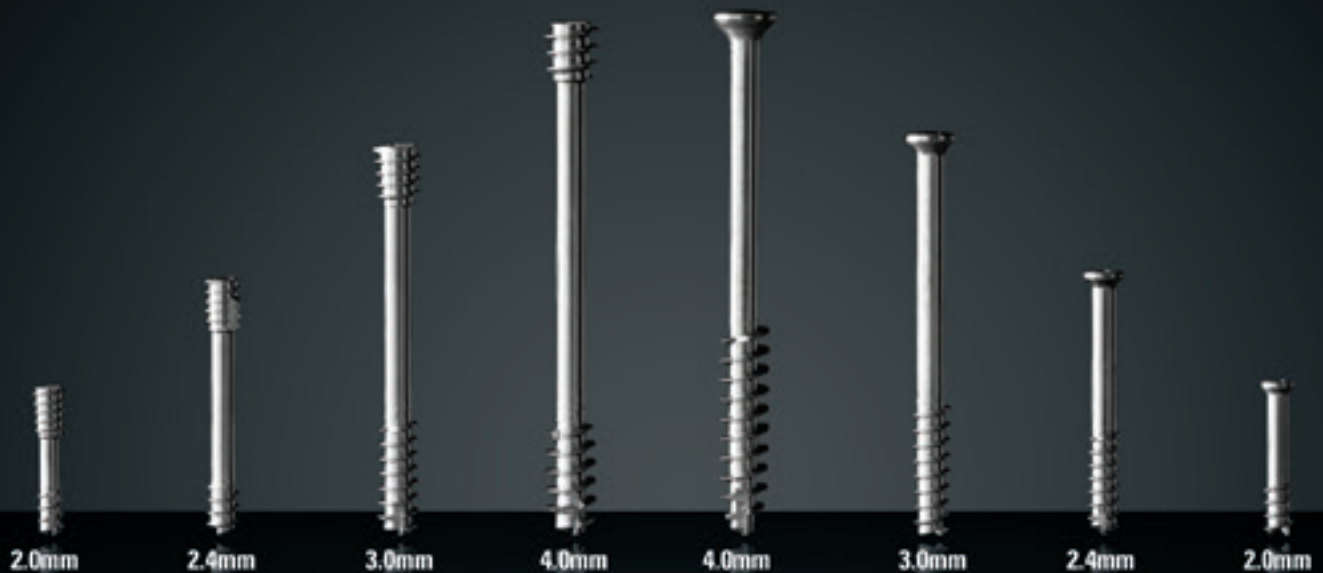


EXTREMIFIX™

Cannulated Screw System



- Titanium, self-drilling & self-tapping screws provide superior compression
- One of the lowest profile cannulated screw heads on the market which helps to minimize soft-tissue irritation
- Reverse cutting flute to facilitate in screw extraction
- Small trailing thread



Rethinking Possibilities, Reshaping Lives

The ExtremiFix cannulated screw system is a comprehensive set of bone fixation screws utilized for fixation of fractures, fusions, osteotomies and reconstruction procedures of the lower extremity. The system offers a titanium partially threaded compression screw in 2.0, 2.4, 3.0 and 4.0 mm screw diameters with lengths of 6 - 52 mm in headed and headless cannulated lag options to treat a variety of indications.

Implant Tray Options



2.0/2.4 mm Tray



3.0/4.0 mm Tray



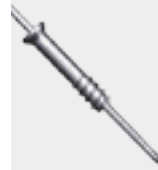
Implant Size Options

CANNULATED HEADED IMPLANTS

- 319-20xx 2.0mm x 6mm-42mm
- 319-24xx 2.4mm x 6mm-50mm
- 319-30xx 3.0mm x 10mm-40mm
- 319-40xx 4.0mm x 12mm-52mm

CANNULATED HEADLESS IMPLANTS

- 317-20xx 2.0mm x 10mm-42mm
- 317-24xx 2.4mm x 10mm-50mm
- 317-30xx 3.0mm x 10mm-40mm
- 317-40xx 4.0mm x 12mm-52mm



Cannulated Headed Screws



The ExtremiFix headed cannulated lag screw offers a low profile head with a recessed cruciform drive mechanism. Self-drilling and self-tapping screw tip facilitates screw insertion while the reverse cutting flute assist in screw extraction. Washers are available providing a larger head surface area for use in osteopenic bone.



Cannulated Headless Screws



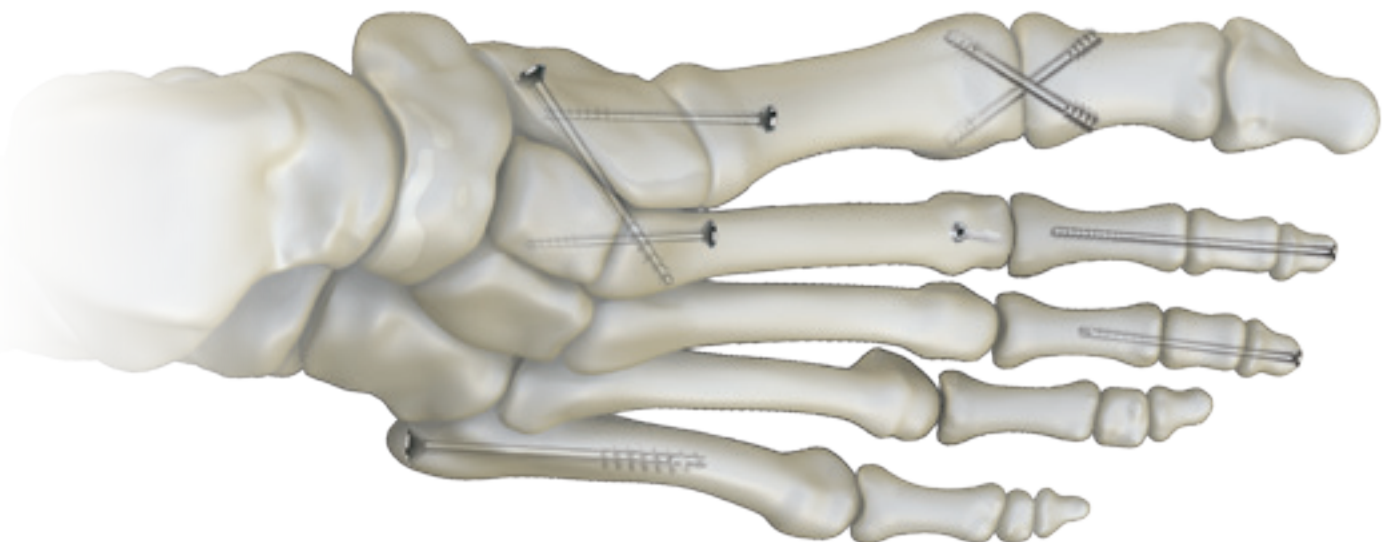
The ExtremiFix Headless compression Screw is a self drilling, self tapping and self countersinking tri-lobe drive cannulated screw with a reverse cutting flute to help facilitate screw extraction.



Lesser Digital Arthrodesis Screws



The long lengths and narrow trailing diameter of the 2.0/2.4mm headed and headless screws provide superior compression with minimal trauma to the distal phalanx bone. The 2.0mm screws come in lengths up to 42mm, while the 2.4mm screws are as long as 50mm.



OsteoMed Products



ExtremiLOCK Ankle Plating System



ExtremiLOCK Ankle Fusion System



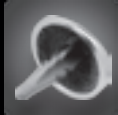
ExtremiLOCK Foot Plating System



Large Cannulated Screws



ExtremiFuse



EnCompass



EnCompass Lessers



Hemi



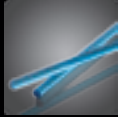
ReFlexion



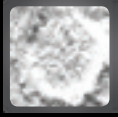
InterPhlex



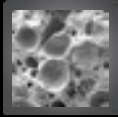
Talar-Fit



Inion



OsteoVationEX



OsteoVation QWIK



OSTEOMED

3885 Arapaho Rd.

Addison, TX 75001

Customer Service: 800.456.7779

Outside the U.S.: 001.972.677.4600

Fax: 800.390.2620

Fax Outside the U.S.: 001.972.677.4709

E-mail: customer.service@osteomed.com

www.osteomed.com

P/N 030-1611 Rev.B