

fps module options

FPS includes plates, screws and instrumentation in 3 different sizes to better treat the indication.



323-0452 FPS™ 2.0mm Drill Guide Locking Assembly



323-1020 FPS™ 2.0mm Driver Stem



323-1113 FPS™ 1.3mm for 2.0mm Screw Pilot Drill



323-1220 FPS™ 2.0mm Clearance Drill Bit



323-1707 FPS™ 2.0mm Countersink



323-1620 FPS™ 1.3mm Pilot/2.0mm CL Drill Guide Non Locking



323-1001 FPS™ Handle Assembly



220-0027 Small Grasping Forceps



323-1720 FPS™ 2.0mm Depth Gauge Assembly



323-1920 FPS™ 2.0mm Screws Compression Drill Guide



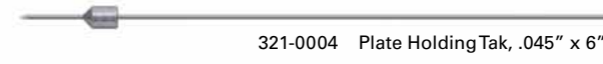
323-1921 FPS™ 2.0mm Screws Locking Drill Guide



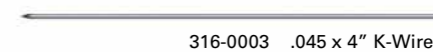
323-1820 FPS™ 2.0mm On-Bone Plate Bender



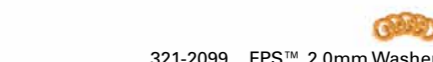
323-1702 FPS™ Mini Screwdriver, Ratchet Body, Cannulated



321-0004 Plate Holding Tak, .045" x 6"



316-0003 .045 x 4" K-Wire



321-2099 FPS™ 2.0mm Washer

fps module options



323-1719 FPS™ Drill Guide Handle



323-1713 FPS™ Lapidus Drill Guide



323-1725 FPS™ Fifth Metatarsal Hook Plate Impactor



316-0003 .045 x 4" K-Wire



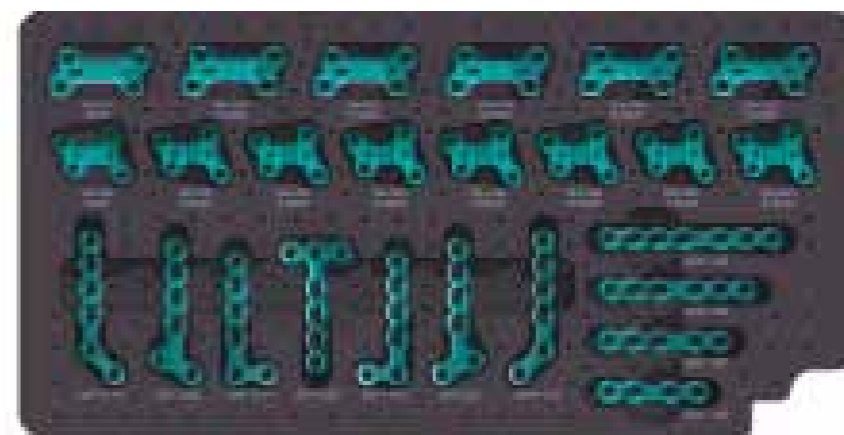
321-0122 .062 x 7.25" K-Wire



321-0004 Plate Holding Tak, .045" x 6"



220-0027 Small Grasping Forceps



fps module options



316-0003 .045 x 4" K-Wire



321-0122 .062 x 7.25" K-Wire



321-0004 Plate Holding Tak, .045" x 6"



220-0027 Small Grasping Forceps

