

# OsteoVation<sup>®</sup> **RMx** SYSTEM INJECTABLE Bone Void Filler



*Rethinking Possibilities, Reshaping Lives*

# FEATURES | INDICATIONS

OsteoVation RMx Injectable is a high performance next generation calcium phosphate cement indicated for filling craniofacial defects.

## Advantages

- Biocompatible
- Allows for natural bone remodeling, or healing, while maintaining the strength of cancellous bone
- Simple assembly with step-by-step instructions
- Quick and easy to mix with supplied mixing system
- Fast, hard-setting cement; approximately 5 minutes at 37°F in wet environment
- Immediate higher compressive strength than cancellous bone
- Can be drilled and inserted with screws
- May be implanted before or after hardware allowing surgeons to maintain their standard surgical technique and allowing precise cement and hardware placement
- Can be mixed with autograft as autograft extender

# MIXING INSTRUCTIONS

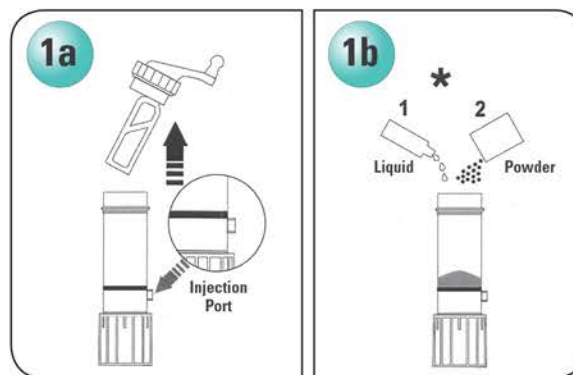
## STEP 1

Unpack all components of OsteoVation RMx System.

Ensure the base of the mixer is rotated all the way **UP** to seal off injection port.

Unscrew top from mixer and pour OsteoVation RMx liquid **FIRST** into mixing chamber.

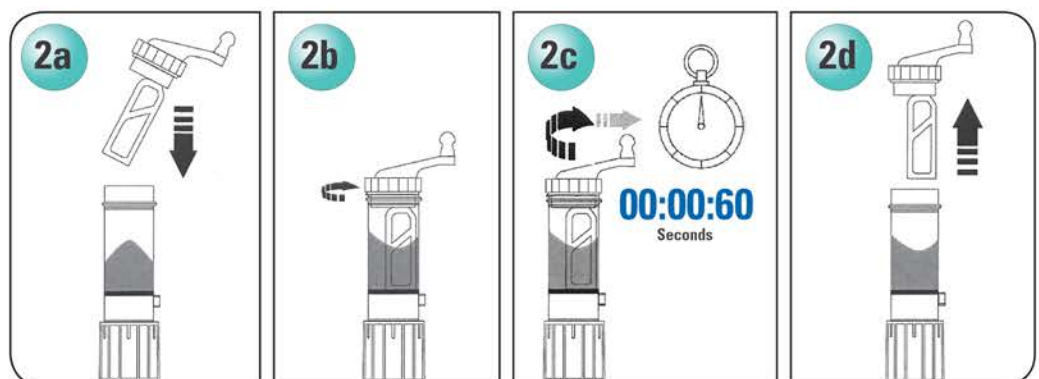
Then pour OsteoVation RMx powder into mixing chamber.



## STEP 2

Screw top back on mixer and rotate the handle quickly in clockwise direction for **60 seconds**.

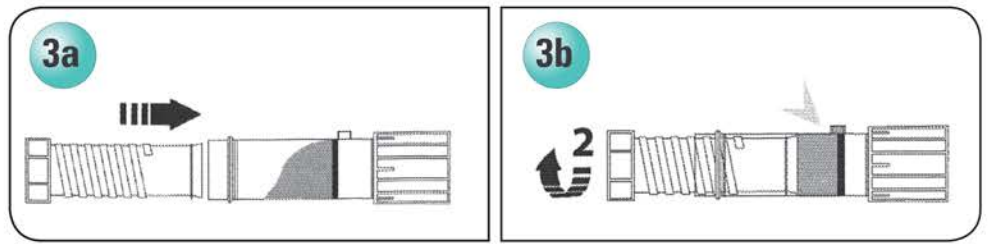
Remove top from the mixer and scrape cement off mixing paddle back into mixer.



### STEP 3

Rotate base of mixer **counter clockwise** into down position

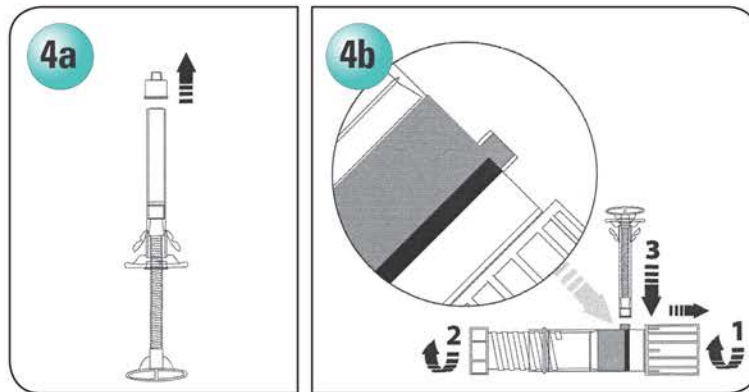
Insert plunger and rotate down **clockwise** until cement starts extruding out of port.



### STEP 4

Unscrew and remove cap from syringe.

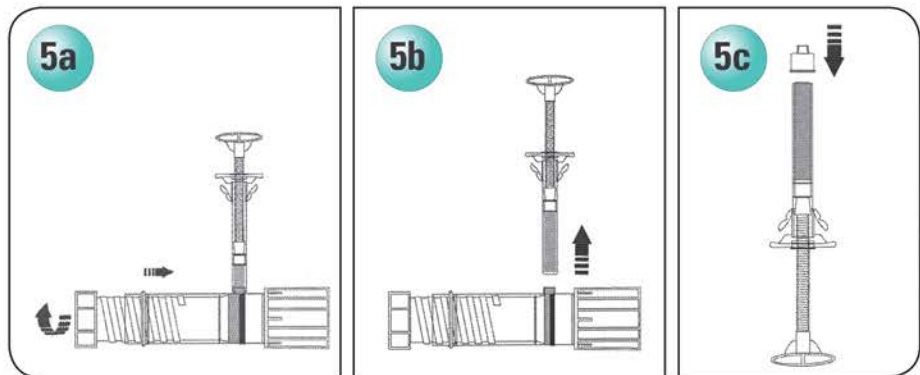
Attach syringe to port on mixer.



### STEP 5

Rotate plunger down **clockwise** to extrude cement into syringe.

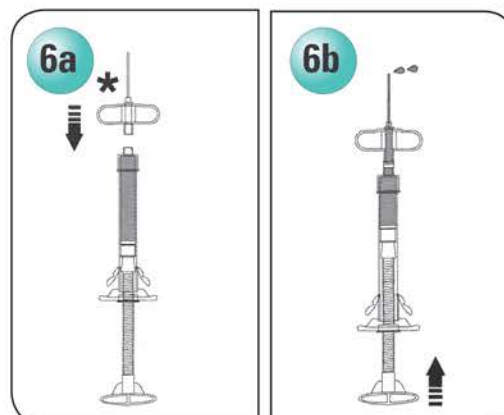
Remove syringe from port and reattach syringe cap.



### STEP 6

Remove trocar from cannula.

Attach cannula to syringe and inject OsteoVation RMx.



# OsteoVation RMx Ordering Information

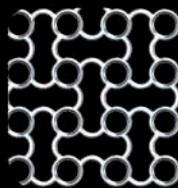
390-6001 – OsteoVation RMx 5cc

390-6002 – OsteoVation RMx 10cc

## OsteoMed Products



DuraKnife



OsteoMed Mesh



Fast-Flap



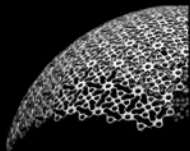
OsteoVation



OsteoDriver 2



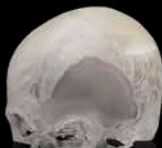
Profile Zero



OsteoForm Mesh



SmartFlex



OsteoMatch



*Rethinking Possibilities, Reshaping Lives*

3885 Arapaho Rd.  
Addison, TX 75001  
Customer Service: 800.456.7779  
Outside the U.S.: 001.972.677.4600  
Fax: 800.390.2620  
Fax Outside the U.S.: 001.972.677.4709  
E-mail: [customer.service@osteomed.com](mailto:customer.service@osteomed.com)  
[www.osteomed.com](http://www.osteomed.com)

P/N 030-XXXX Rev.A