

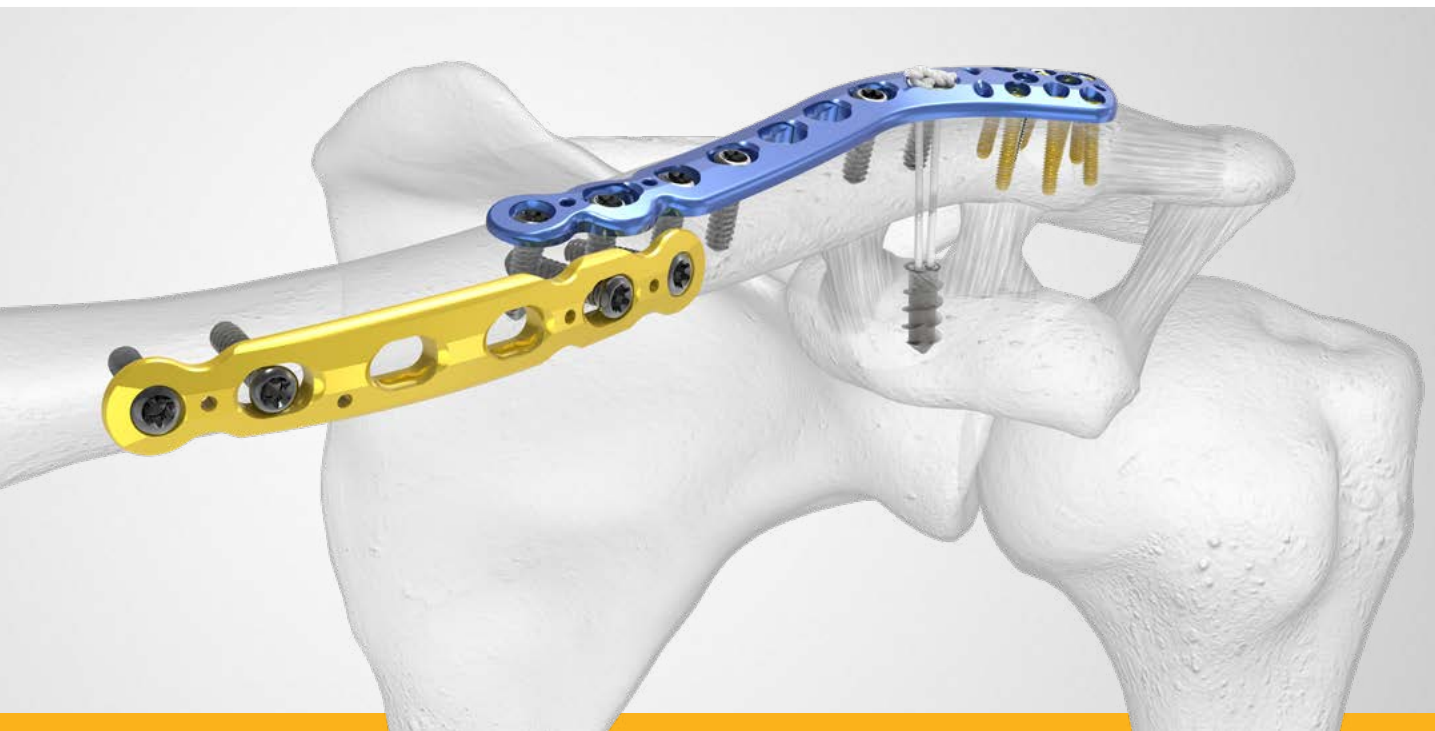


acumed®

Clavicle Plating System

Acu-Sinch® Repair System | Clavicle Hook Plating System

Product Overview





Acumed® Clavicle Plating System

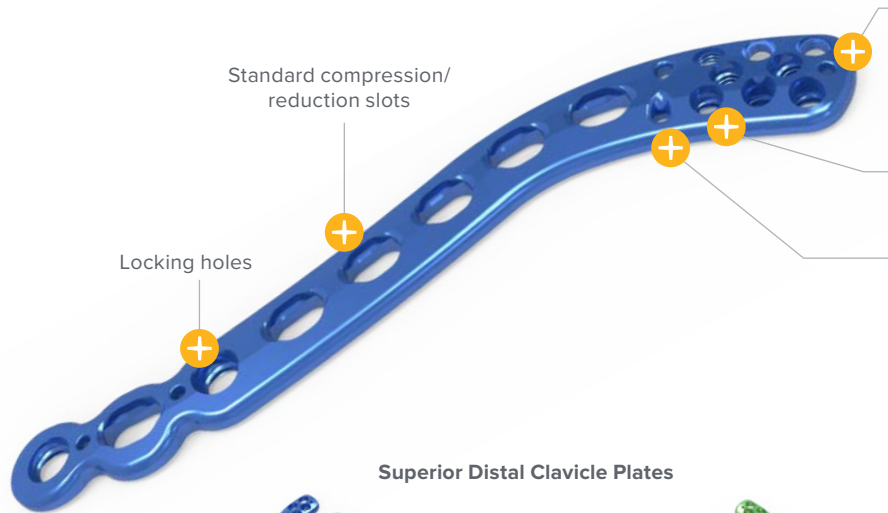
A comprehensive system to treat fractures of the clavicle and AC/CC injuries, the Clavicle Plating System offers Superior Distal, Superior Midshaft, Anterior, and Hook Plates to address a variety of clavicle fracture patterns. The Acu-Sinch® and Clavicle Hook Plating Systems offer two treatment options for acromioclavicular injuries. Acumed's first-to-market precontoured Clavicle Plate options have been a leader in clavicle fracture fixation since their introduction in 2003.

Superior Distal Clavicle Plates

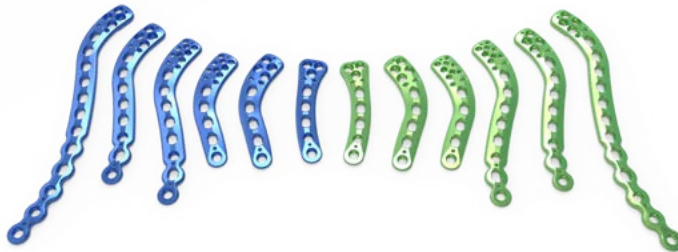
.062" K-wire holes for provisional stability and to help visualize screw trajectory near the AC joint

Fixed-angle locking screw holes

Suture holes allow adjunct support for healing of CC ligaments and AC joint injuries



Superior Distal Clavicle Plates

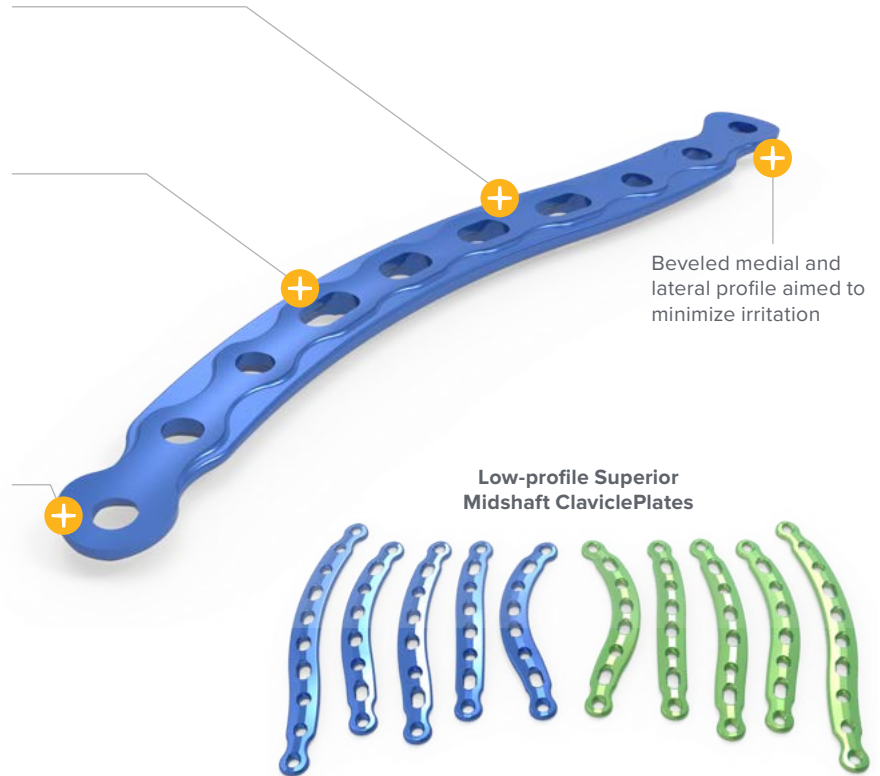


Low-profile Superior Midshaft Clavicle Plates

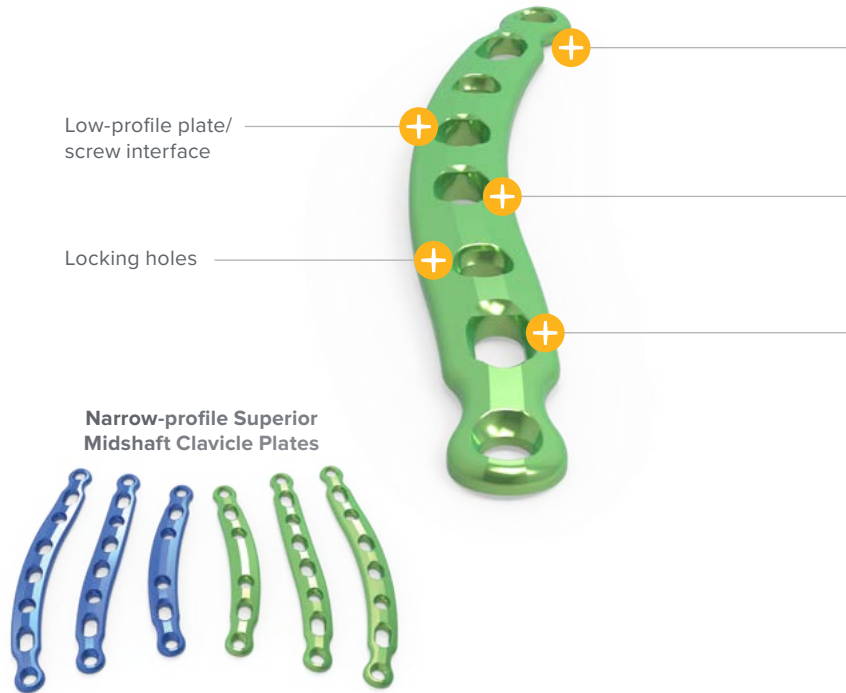
Limited Contact Design (LCD) is intended to support healing of the periosteum

Rounded holes aimed to minimize irritation

Tapered plate ends designed to reduce the risk of stress risers



Narrow-profile Superior Midshaft Clavicle Plates



10° angled medial and lateral locking screw holes

Standard compression/reduction slots

Large compression/reduction slots

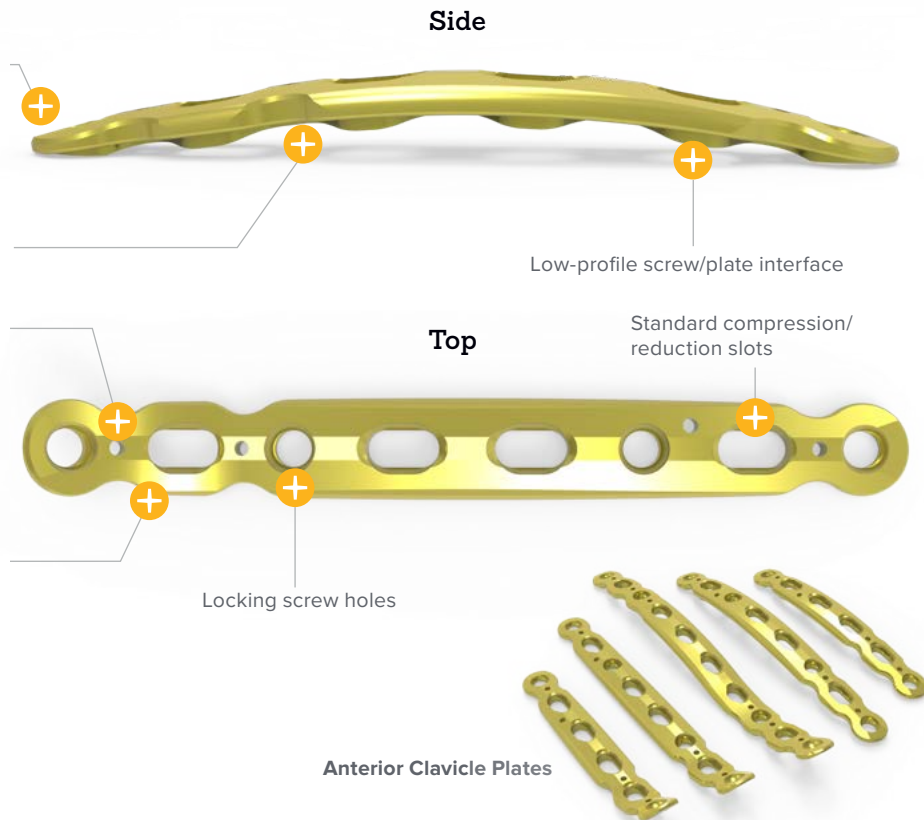
Anterior Clavicle Plates

Tapered medial and lateral plate ends are designed to aid in minimizing irritation and reduce stress concentrations

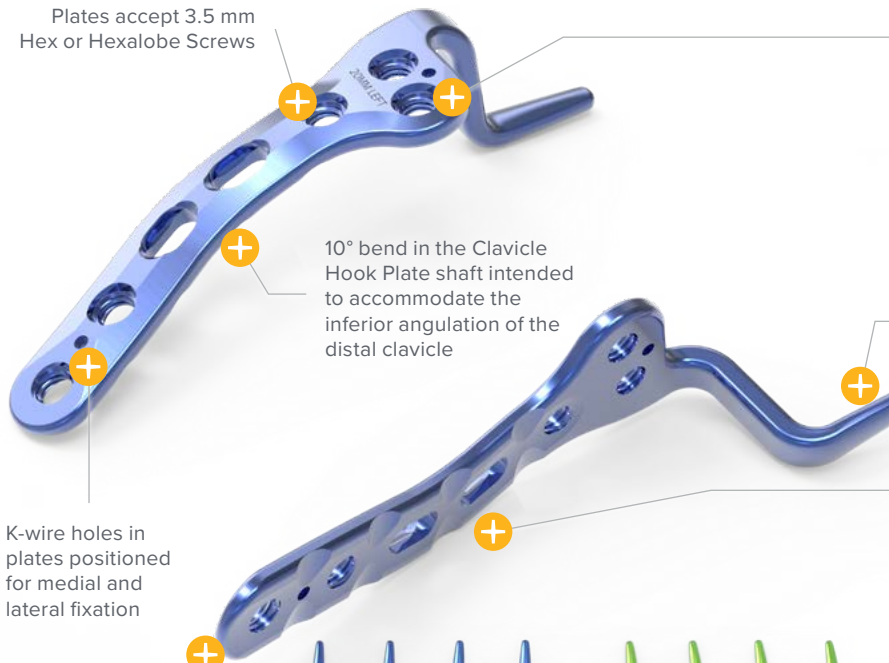
Limited Contact Design (LCD) is intended to support healing of the periosteum

.062" K-wire holes for provisional stability

Beveled superior and inferior profiles are designed to help minimize irritation



Plates accept 3.5 mm Hex or Hexalobe Screws



10° bend in the Clavicle Hook Plate shaft intended to accommodate the inferior angulation of the distal clavicle

K-wire holes in plates positioned for medial and lateral fixation

Plate thickness (3.4 mm) and width (11.2 mm) designed to minimize hardware prominence



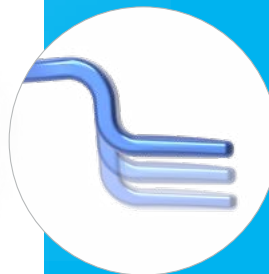
Clavicle Hook Plates

Clavicle Hook Plates

Posterior hook placement designed to avoid contact with the rotator cuff and surrounding soft tissue structures

5° inferior inclination of the hook tip designed to help avoid notching on the underside of the acromion

Limited-contact undersurface may aid in preservation of blood supply to the fracture site

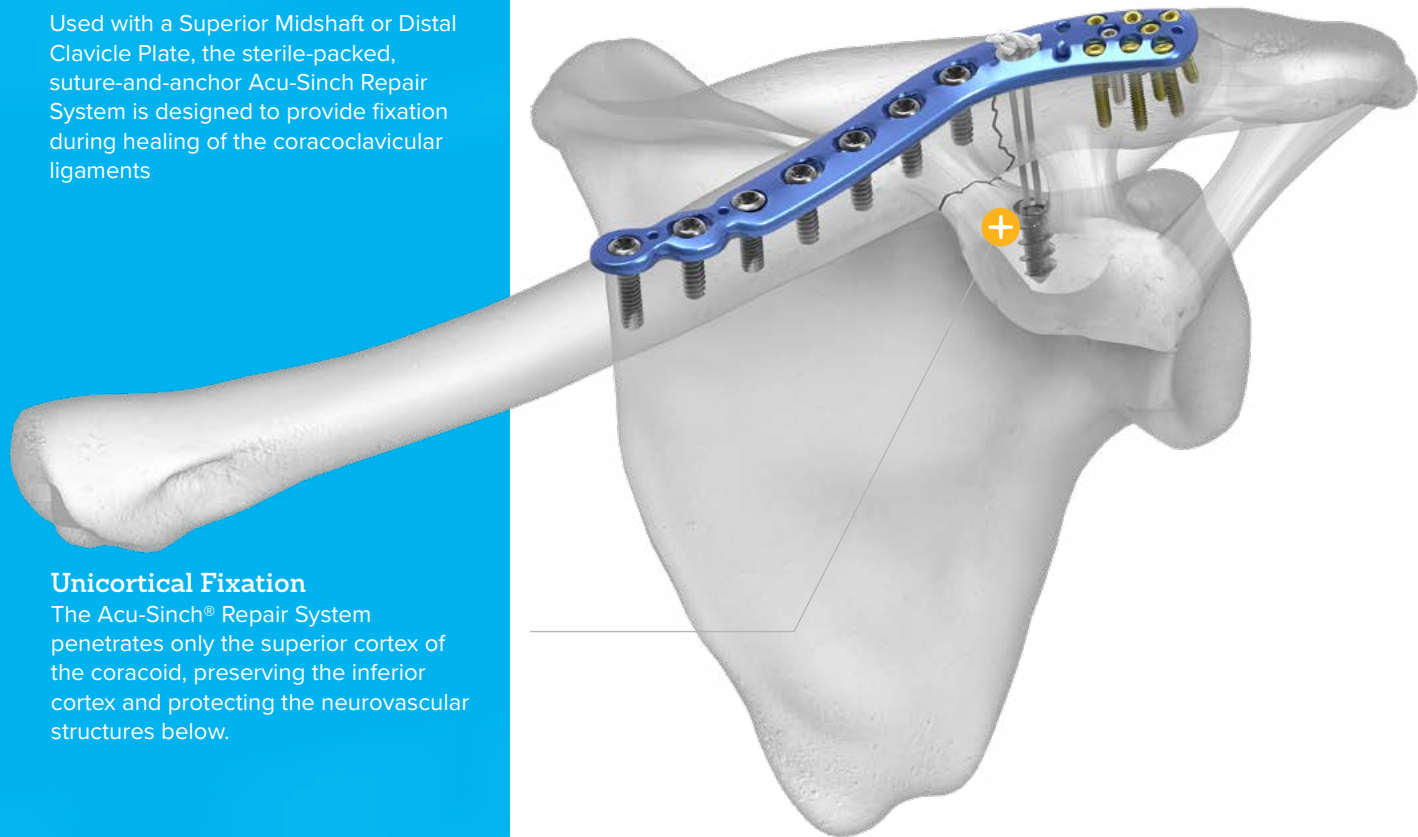


Three hook depths:

- 12 mm
- 16 mm
- 20 mm

Acu-Sinch® Repair System

Used with a Superior Midshaft or Distal Clavicle Plate, the sterile-packed, suture-and-anchor Acu-Sinch Repair System is designed to provide fixation during healing of the coracoclavicular ligaments



Unicortical Fixation

The Acu-Sinch® Repair System penetrates only the superior cortex of the coracoid, preserving the inferior cortex and protecting the neurovascular structures below.



Suture Retainer

Fits into any slot in the Acumed Midshaft Superior or Distal Clavicle Plates

Concave design may minimize the potential for soft tissue irritation



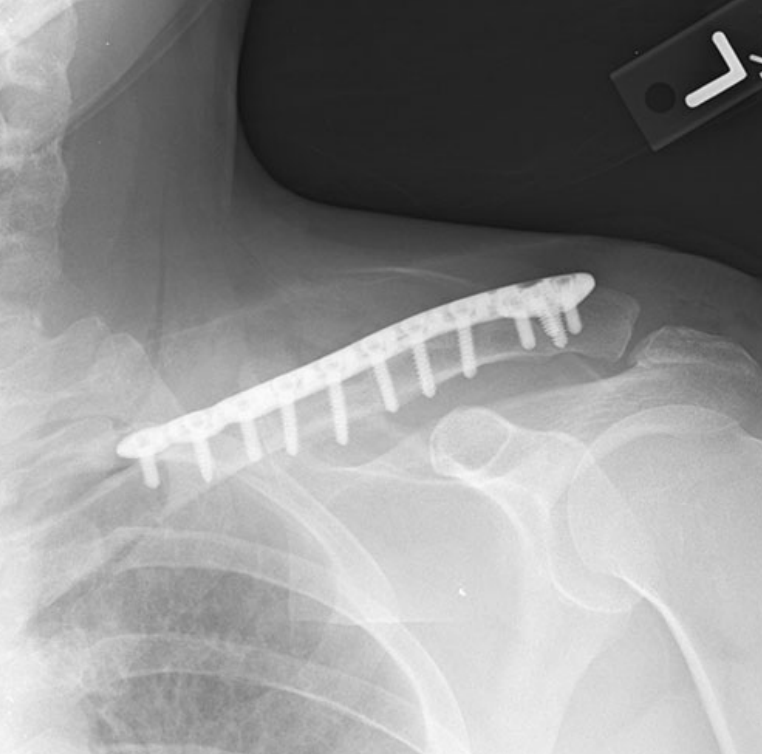
Drill

3.5 mm Acu-Sinch Drill with a shoulder to help ensure drilling only through the superior cortex of the coracoid



FlexBraid Suture

The FlexBraid Suture is a #5, non-absorbable, UHMWPE (Ultra high molecular weight polyethylene) suture



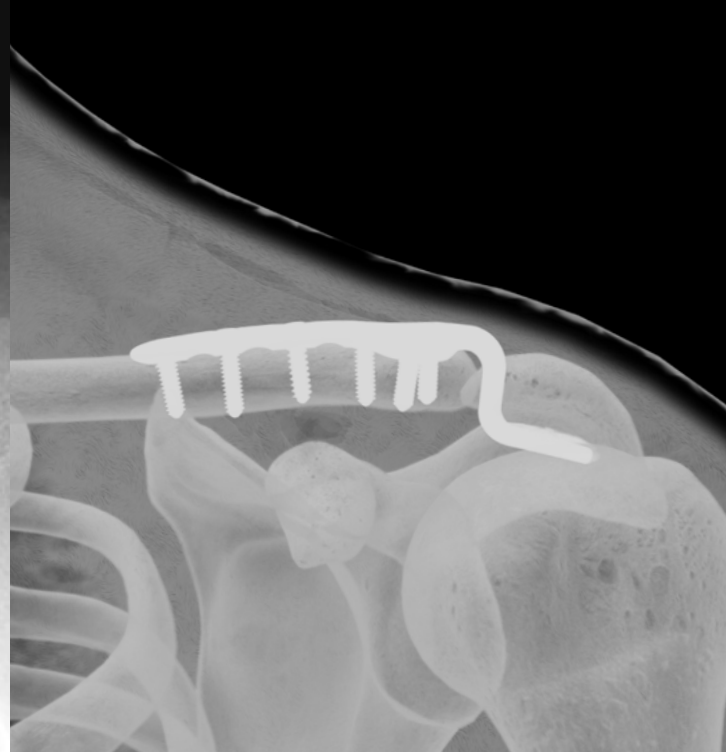
Superior Distal Clavicle Plate



Low-profile Superior Midshaft Clavicle Plates



Anterior Clavicle Plate



Clavicle Hook Plate

Superior Midshaft
Clavicle Plate
Surgical Technique

Preoperative
Planning



Exposure

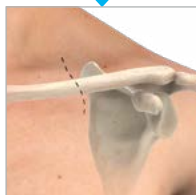
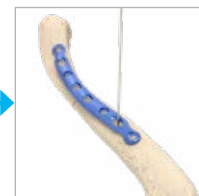


Plate Selection



Plate Placement



Anterior Clavicle
Plate Surgical
Technique



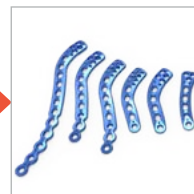
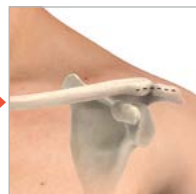
Exposure

Plate Selection

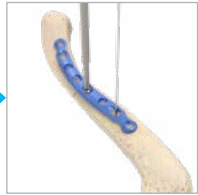
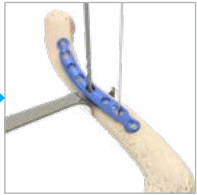
Plate Placement

Superior Distal
Clavicle Plate
Surgical Technique

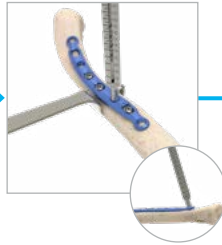
Preoperative
Planning



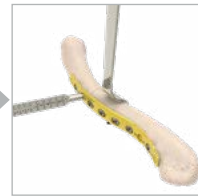
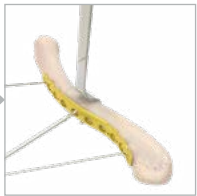
Nonlocking Screw Insertion



Locking Screw Insertion



Final Plate and Screw Position



Nonlocking Screw Insertion



Nonlocking Distal Screw Insertion



Locking Screw Insertion



Final Plate and Screw Position



**Clavicle Hook
Plate Surgical
Technique**

**Preoperative
Planning and
Patient Positioning**



Exposure



**Reduction and
Lagging**

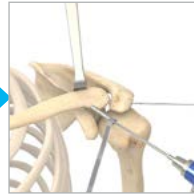
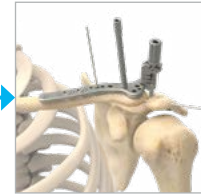


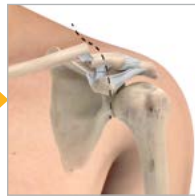
Plate Selection



**Preoperative
Planning and
Patient Positioning**



Exposure



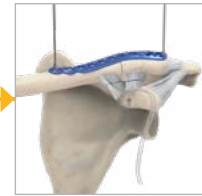
**Coracoid Exposure
and Drilling**



**Anchor Insertion
and Suture Release**

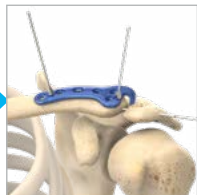


**Plate Selection and
Plate Placement**

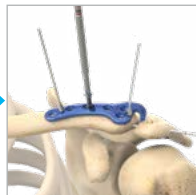


**Acu-Sinch®
Repair System**

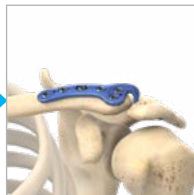
Plate Placement



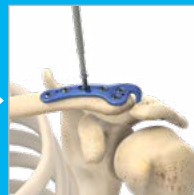
Screw Insertion



Final Plate and Screw Position



Implant Removal



Nonlocking Screw Insertion



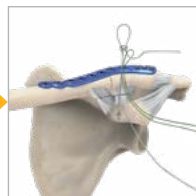
Locking Screw Insertion



Drill



Suture Passing



Suture Retainer Assembly, Reduction and Knot Tying



Wound Closure and Post-op





Acumed Headquarters
5885 NE Cornelius Pass Road
Hillsboro, OR 97124

Office: +1.888.627.9957
Office: +1.503.627.9957
Fax: +1.503.520.9618
www.acumed.net

SHD00-04-B | Effective: 2021/07 | © 2021 Acumed® LLC

These materials contain information about products that may or may not be available in any particular country or may be available under different trademarks in different countries. The products may be approved or cleared by governmental regulatory organizations for sale or use with different indications or restrictions in different countries. Products may not be approved for use in all countries. Nothing contained in these materials should be construed as a promotion or solicitation for any product or for the use of any product in a particular way that is not authorized under the laws and regulations of the country where the reader is located. Nothing in these materials should be construed as a representation or warranty as to the efficacy or quality of any product, nor the appropriateness of any product to treat any specific condition. Physicians may direct questions about the availability and use of the products described in these materials to their authorized Acumed distributor. Specific questions patients may have about the use of the products described in these materials or the appropriateness for their own conditions should be directed to their own physician.

Acumed®, FlexBraid®, and Acu-Sinch® are registered trademarks of Acumed LLC