



# ExtremiLock™

Ankle Fusion Plating System

## Product Overview

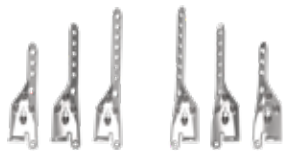
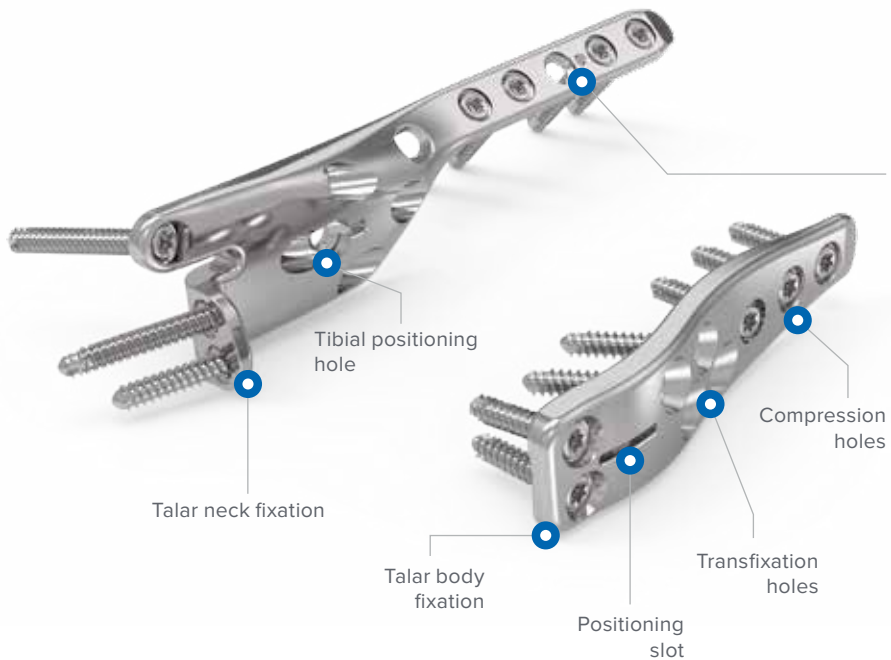




## OsteoMed® ExtremiLock™ Ankle Fusion Plating System

The OsteoMed ExtremiLock Ankle Plating System provides a comprehensive solution for ankle fractures and ankle fusion management.

The Ankle Fusion Plating System includes anatomically contoured anterior, posterior, and lateral fusion plates to address TT (tibiotalar) and TTC (tibiotalocalcaneal) arthrodesis. The plates feature universal holes that accept 3.5 mm and 4.0 mm locking, nonlocking, and variable angle locking screws and 4.0 mm fully threaded cannulated screws. An ExtremiFix™ 5.5 mm partially threaded cannulated screw can be used in the Lateral Fusion Plate for tibiotalar compression through the 5.5 mm anatomic transfixation hole.



**Anterior Fusion Plates**  
3H, 5H, and 7H



**Posterior Fusion Plates**  
3H and 6H

## Anterior and Posterior Fusion Plates

### Universal Screw Holes

3.5 mm and 4.0 mm cortical locking and nonlocking screws available for patient specific fixation

### Anterior Fusion Plate

The ExtremiLock Ankle Fusion Plating System includes left and right Anterior Fusion Plates. The plates feature multiple tibiotalar fixation options, angled locking capability, compression holes, a bulleted tip to facilitate plate insertion, and an anatomic shape plate

### Posterior Fusion Plate

The ExtremiLock Ankle Fusion Plating System includes a universal Posterior Fusion Plate. The plates are made from titanium alloy and accommodate 3.5 mm and 4.0 mm locking, nonlocking, and variable angle locking screws

## Lateral Tibiotalar (TT) Fusion Plate

### Multiple Compression Options

Oblong holes, transfixation holes, and an anatomic transfixation 5.5 mm lag screw compression hole designed to cross the arthrodesis site within the plate

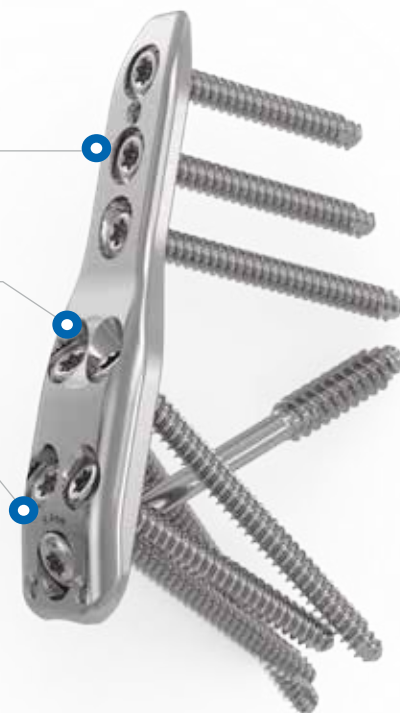
### Low-Profile

Tapered proximal tip and solid low-profile design eases percutaneous insertion and minimizes soft tissue irritation

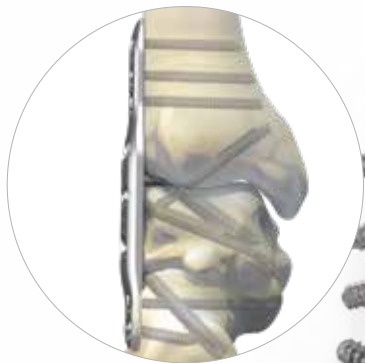


Transfixation holes

5.5 mm Transfixation  
Screw Hole



Lateral Tibiotalar (TT)  
Fusion Plate



Up to five points of fixation in the tibia, talus, and calcaneus to maximize construct stability

5.5 mm Transfixation Screw Hole



**Lateral Tibiotalar (TTC)  
Fusion Plate**



## Lateral Tibiotalar (TTC) Fusion Plate

### Universal Screw Holes

3.5 mm and 4.0 mm cortical locking and nonlocking screws available for patient specific fixation

### Multiple Compression Options

Oblong holes, transfixation holes, and an anatomic transfixation 5.5 mm lag screw compression hole designed to cross the arthrodesis site within the plate

### Low-Profile

Tapered proximal tip and solid low-profile design eases percutaneous insertion and minimizes soft tissue irritation

## ExtremiLock™ Ankle Fusion Plating System

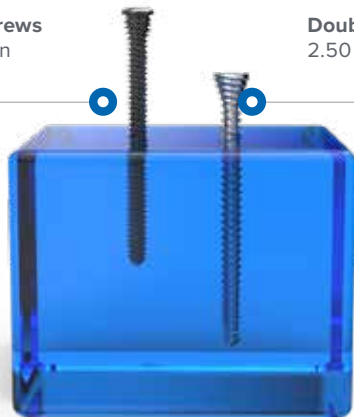
The Ankle Fusion Plates are housed within the ExtremiLock Ankle Fusion Module which resides at the bottom of the ExtremiLock Ankle Plating System tray



ExtremiLock Ankle  
Fusion Module

**Single Lead Screws**  
1.25 mm per turn

**Double Lead Screws**  
2.50 mm per turn



## Screw Features

### Cannulated Screws

The ExtremiLock™ Ankle Fusion Plating System features double lead screw technology and provides surgeons with a broad range of screw fixation options. All screws are made from titanium alloy and include: 3.5 mm and 4.0 mm cortical locking and nonlocking screws, as well as 4.0 mm cancellous nonlocking cannulated screws.

### Locking Screws

Locking screws can be locked on-axis with the plate threads or +/- 20° of variable angled locking in any direction (40° conical). Screws can be locked and unlocked up to three times without sacrificing the integrity of the plate/screw interface



Anterior Fusion

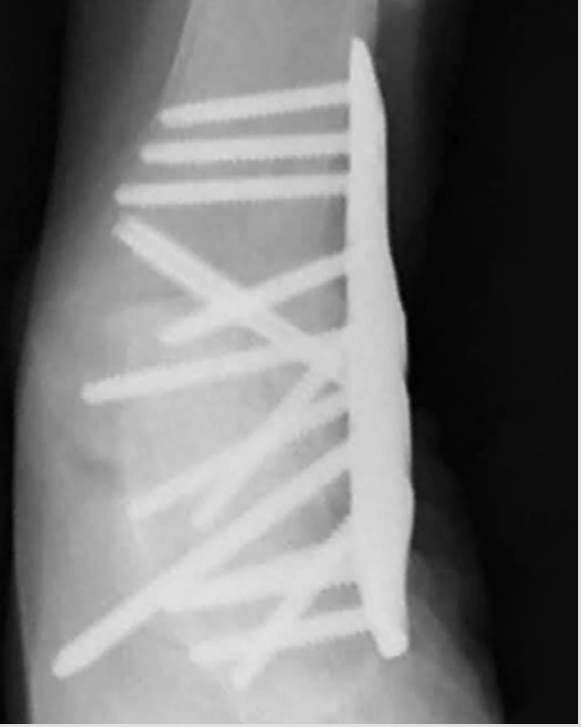


Posterior Fusion





Lateral Tibiotalar (TT) Fusion



Lateral Tibiotalocalcaneal (TTC) Fusion

**Anterior Fusion  
Plate Surgical  
Technique**

**Implant Placement**



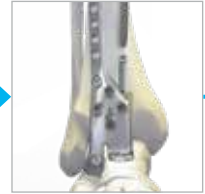
**Talus Fixation**



**Tibia Compression  
Hole**



**Transfixation Holes**



**Posterior Fusion  
Plate Surgical  
Technique<sup>1</sup>**

**Implant Placement**



**Talus Fixation**



**Tibia Compression  
Hole**



**Transfixation Holes**

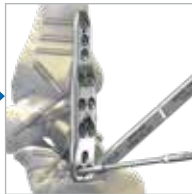


**Lateral (TT & TTC)  
Fusion Plate Surgical  
Technique**

**Implant Placement**



**Talus Fixation**



**Tibiotalar Compression Options**

**Option A**  
5.5mm Transfixation  
Screw Hole



**Option B**  
Tibial Compression  
Hole



**Option C**  
Tibiotalar (TT)  
Transfixation Screws



### Tibial Positioning Hole

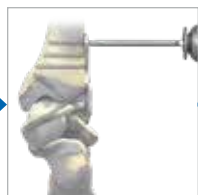


Final Anterior Fusion Plate Construct



Final Posterior Fusion Plate Construct

### Tibia Fixation



### Subtalar Compression Options (TTC Plate)

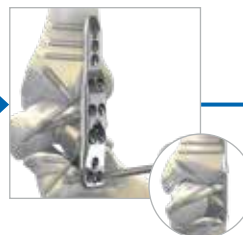
Option A  
Calcaneal  
Compression Hole



Option B  
Subtalar  
Transfixation Screws



### Calcaneal Fixation (TT Plate)



(TT)



(TTC)

Final Lateral Fusion Plate Constructs



OsteoMed Headquarters  
3885 Arapaho Rd  
Addison, TX 75001

Office: +1.800.456.7779  
[customer.service@osteomed.com](mailto:customer.service@osteomed.com)  
[www.osteomed.com](http://www.osteomed.com)

030-1907 Rev.B | Effective: 2022/02 | © 2022 OsteoMed® LLC

These materials contain information about products that may or may not be available in any particular country or may be available under different trademarks in different countries. The products may be approved or cleared by governmental regulatory organizations for sale or use with different indications or restrictions in different countries. Products may not be approved for use in all countries. Nothing contained in these materials should be construed as a promotion or solicitation for any product or for the use of any product in a particular way that is not authorized under the laws and regulations of the country where the reader is located. Nothing in these materials should be construed as a representation or warranty as to the efficacy or quality of any product, nor the appropriateness of any product to treat any specific condition. Physicians may direct questions about the availability and use of the products described in these materials to their authorized distributor. Specific questions patients may have about the use of the products described in these materials or the appropriateness for their own conditions should be directed to their own physician.

OsteoMed®, ExtremiLock™, and ExtremiFix™ are registered trademarks of OsteoMed LLC.