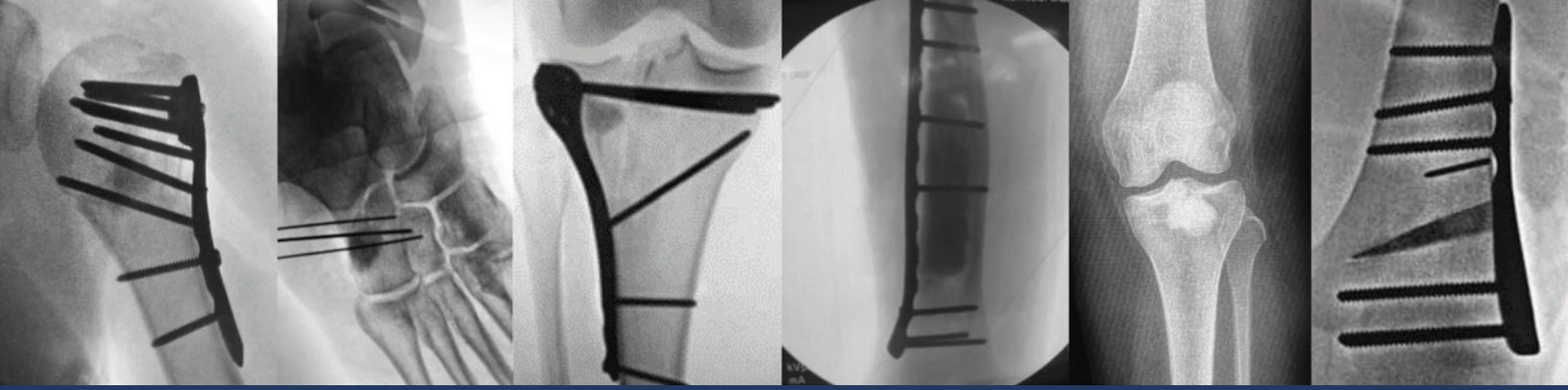




Rethinking Possibilities, Reshaping Lives

Magnesium Driven.



MAGNESIUM PHOSPHATE BONE VOID FILLER



The **first** and **only**** **magnesium** based bone void filler in the orthopedic marketplace.

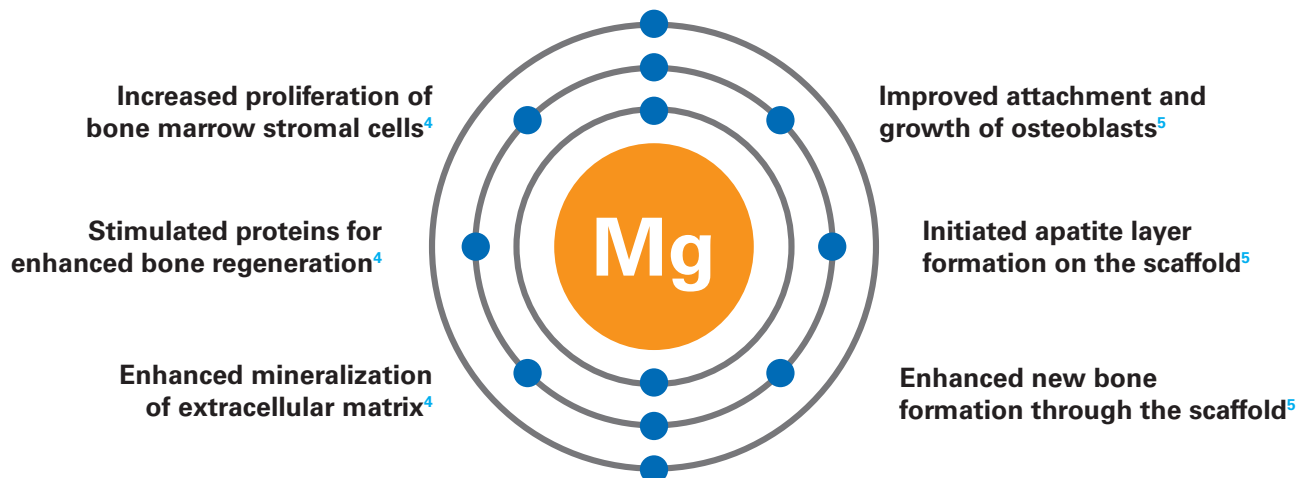
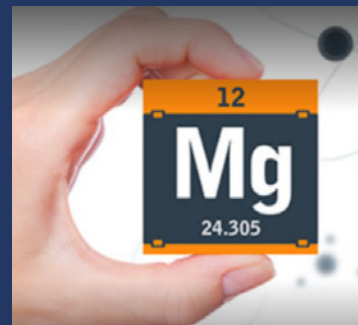
- 3X Compressive Strength of Cancellous Bone*
- Excellent Binding Characteristics*
- Remodels to Normal Bone, 80% in 26 weeks*

*All claims based on critically sized rabbit lateral condyle defect model. It is unknown how results from the rabbit model compare with clinical results in humans. Data on file.

**As of March 2017.

Why Magnesium?

- Contributes to the structural development of bone
- Approximately 60% of magnesium in the body resides in the bone
- Magnesium deficiency can contribute to osteoporosis
- Plays a role in the active transport of calcium and potassium ions across cell membranes



Yoshizawa et al. Magnesium ion stimulation of bone marrow stromal cells enhances osteogenic activity, stimulation the effect of magnesium alloy degradation. Acta Biomater. 2014; 10(6): 2834-42.⁴
 Wong et al. Engineered polycaprolactone-magnesium hybrid biodegradable porous scaffold for bone tissue engineering. Materials International. 2014; 24: 561-567⁵

Ordering Information



Kit Contents: Liquid & Powder Set, Mixing Syringe, Funnel, Basin, Spatula, and 11GA Cannula and 2GA Cannula

P/N	Description & Sizes
390-8500	OsteoMed BVF - 5cc - Full Kit
390-8501	OsteoMed BVF - 10cc - Full Kit
390-8502	OsteoMed BVF - 15cc - Full Kit
390-8503	OsteoMed BVF - 5cc - Basic Kit
390-8504	OsteoMed BVF - 10cc - Basic Kit
390-8505	OsteoMed BVF - 15cc - Basic Kit
390-8506	BVF - Mixing & Delivery System
390-8507	BVF - Bead Mat Pak
390-8508	BVF - Mechanical Advantage Pak
390-8509	BVF - Cannula Pak



Kit Contents: Liquid & Powder Set, Basin & Spatula



For more information please contact customer.service@osteomed.com

Refer to the provided instructions for use for the complete indications, contraindications, warnings, and instructions for use.

