



**OSTEOMED**  
CMF MESH PRODUCTS

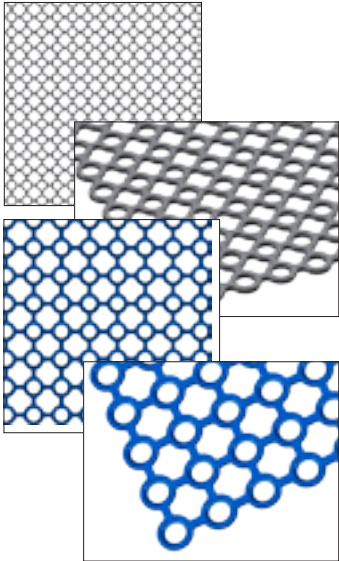


*Rethinking Possibilities, Reshaping Lives*

# OsteoMed Meshes

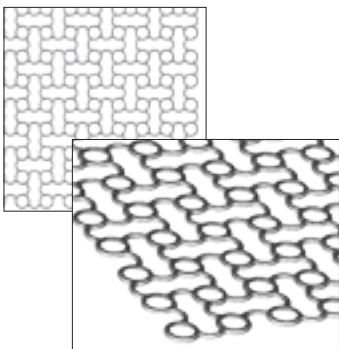
OsteoMed offers a comprehensive portfolio of mesh products for CMF and neurosurgical applications. Regardless of specialty, surgeons will find all the appropriate dimensions, profiles, and patterns of mesh necessary to ensure positive patient outcomes.

## Circle Grid



Part Number	Screw Diameter	Size	Thickness	Adaptability
212-0150	1.2	50mm x 74mm	.3mm	Malleable
218-0036	1.6	36mm x 50mm	.3mm	Malleable
218-0039	1.6	50mm x 74mm	.3mm	Malleable
218-0052	1.6	50mm x 74mm	.4mm	Rigid
218-0285	1.6	50mm x 80mm	.4mm	
218-0040	1.6	111mm x 191mm	.3mm	Malleable
218-0053	1.6	125mm x 180mm	.6mm	Rigid
218-0041	1.6	150mm x 300mm	.5mm	Malleable
210-1024	2.0	124mm x 124mm	.6mm	Rigid
210-1025	2.0	124mm x 124mm	.6mm	
210-0115	2.0	150mm x 150mm	.8mm	
210-0116	2.0	150mm x 300mm	.8mm	

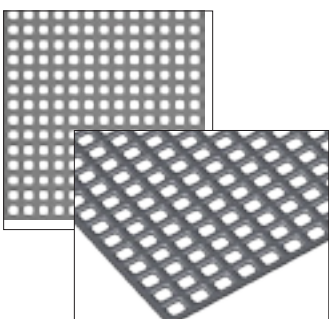
## Dynamic



Part Number	Screw Diameter	Size	Thickness	Adaptability
213-1617	1.6	93mm x 93mm	.4mm	
213-1612	1.6	93mm x 93mm	.5mm	
213-1613	1.6	93mm x 93mm	.6mm	
213-1620	1.6	93mm x 93mm	.6mm	Rigid
213-1618	1.6	93mm x 93mm	.7mm	
213-1622	1.6	161mm x 187mm	.6mm	Rigid
213-1623	1.6	161mm x 187mm	.6mm	
213-1614	1.6	203mm x 203mm	.5mm	
213-1621	1.6	203mm x 203mm	.6mm	Rigid
213-1624	1.6	203mm x 203mm	.6mm	

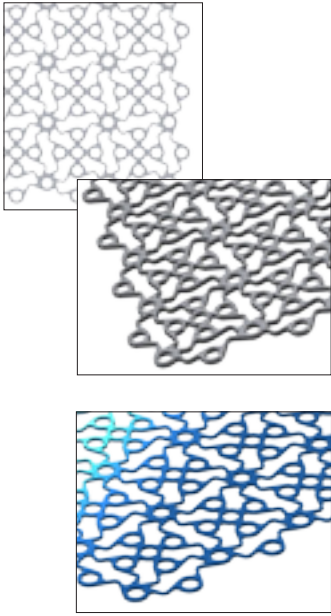
*All dynamic meshes are beveled to be compatible with Profile Zero Screws*

## Square Grid



Part Number	Screw Diameter	Size	Thickness
210-0074	2.0	75mm x 127mm	.5mm
210-0078	2.0	90mm x 127mm	.5mm
210-0076	2.0	127mm x 127mm	.5mm

## OsteoForm

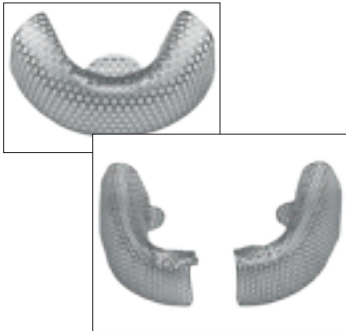


Part Number	Screw Diameter	Size	Thickness	Adaptability
212-0146	1.2	40mm x 40mm	.3mm	Malleable
212-0148	1.2	90mm x 90mm	.3mm	Malleable
218-0290*	1.6	65mm x 90mm	.4mm	
218-2001	1.6	40mm x 40mm	.3mm	Malleable
218-2001-SP	1.6	40mm x 40mm	.3mm	Malleable
218-2002	1.6	40mm x 40mm	.7mm	Rigid
218-2002-SP	1.6	40mm x 40mm	.7mm	Rigid
218-2003	1.6	90mm x 90mm	.3mm	Malleable
218-2003-SP	1.6	90mm x 90mm	.3mm	Malleable
218-2004	1.6	90mm x 90mm	.7mm	Rigid
218-2004-SP	1.6	90mm x 90mm	.7mm	Rigid
218-2006	1.6	90mm x 90mm	.7mm	Preformed
218-2006-SP	1.6	90mm x 90mm	.7mm	Preformed
218-2005	1.6	95mm x 165mm	.7mm	Preformed
218-2005-SP	1.6	95mm x 165mm	.7mm	Preformed
218-2007	1.6	95mm x 165mm	.7mm	Rigid
218-2008	1.6	95mm x 165mm	1.0mm	Preformed (Extra) Rigid
218-2014	1.6	95mm x 165mm	1.0mm	(Extra) Rigid
210-2001	2.0	90mm x 90mm	.5mm	

(-SP) denotes Sterile Packed

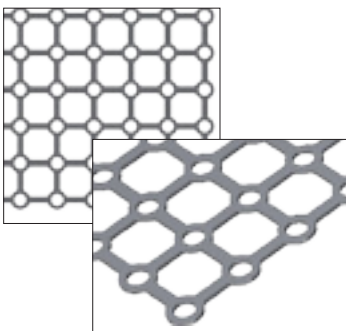
(\*) denotes Profile Zero Screw Compatibility

## RidgeForm

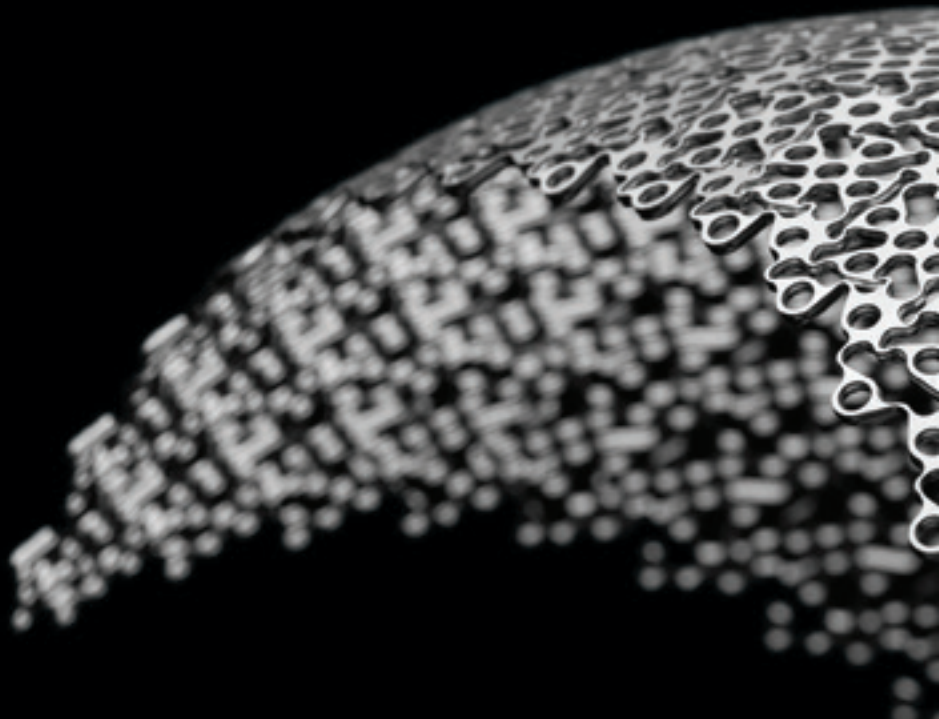


Part Number	Screw Diameter	Size	Thickness	Adaptability
224-0030	1.6	11mm	.3mm	Anterior Mesh
224-0031	1.6	11mm	.3mm	Hemi (L Mand./R Maxilla)
224-0032	1.6	11mm	.3mm	Hemi (R Mand./L Maxilla)
224-0033	1.6	16mm	.3mm	Anterior Mesh
224-0034	1.6	16mm	.3mm	Hemi (L Mand./R Maxilla)
224-0035	1.6	16mm	.3mm	Hemi (R Mand./L Maxilla)
224-0036	1.6	76mm x 76mm	.3mm	

## Micro Mesh



Part Number	Screw Diameter	Size	Thickness
212-0042	1.2	37mm x 50mm	.3mm
212-0043	1.2	74mm x 99mm	.4mm



**OSTEOMED**

3885 Arapaho Rd.

Addison, TX 75001

Customer Service: 800.456.7779

Customer Service Fax: 800.390.2620

[www.osteomed.com](http://www.osteomed.com)

P/N 030-1867 Rev.A

